

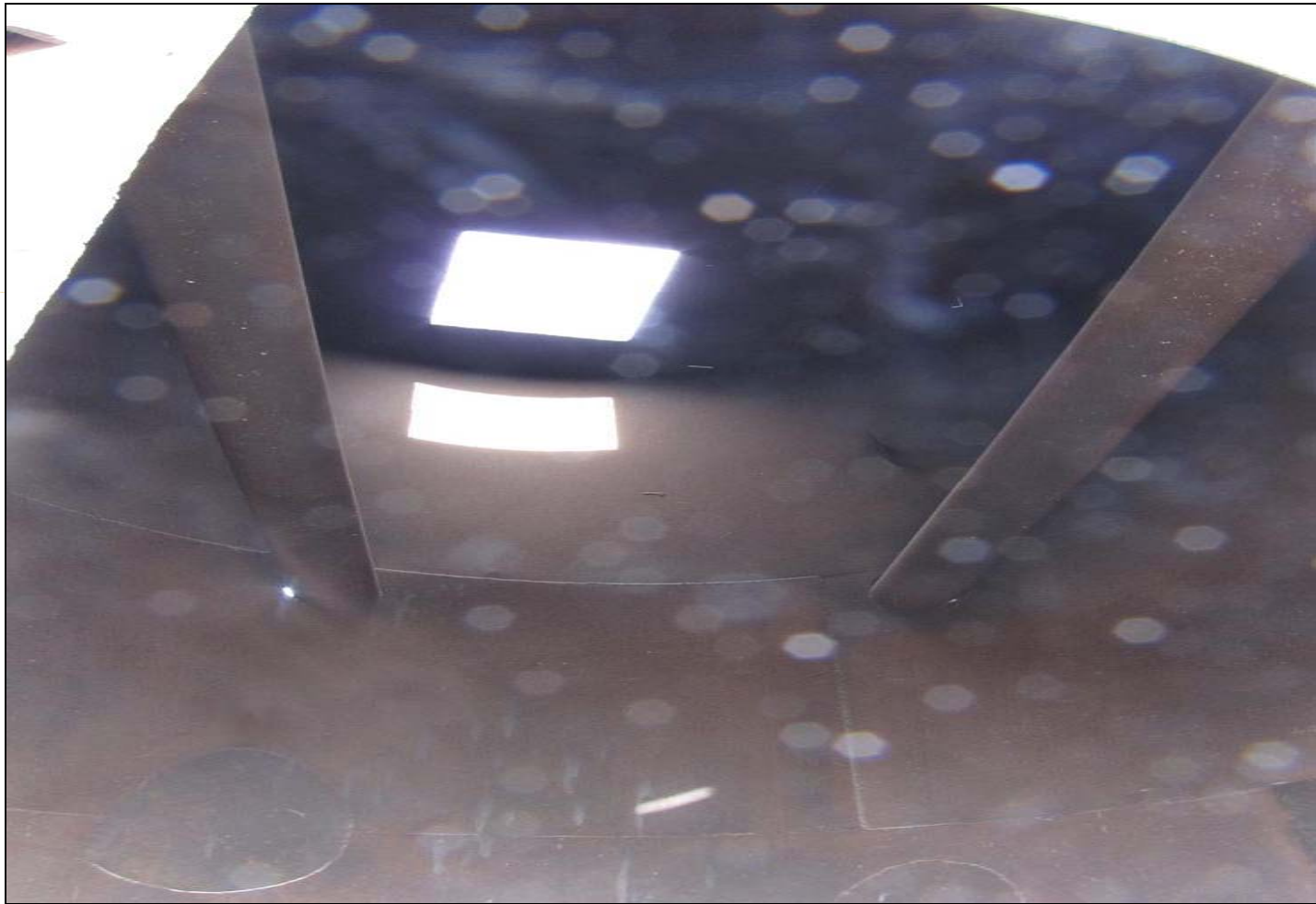


# GOLOVIN'S BURN UNIT

**Burn unit with pile of cover material waiting to properly cover waste ash when unit is emptied.**



Looking up into burn unit...8" casings that are welded inside up top for easier mobility of the unit.





# Waste door (access) for burn unit...



## Loading burn unit...

Notice outside view of casings. Operator sticks forks into the casings to maneuver the unit around to empty it.

